

# MOST POPULAR NATIONAL STOCK NUMBERS (NSN)



## TACTICAL LOCKER SMALL

NSN: 8145-01-512-1023

52" / 42" / 65" ( W / D / H)

Weight 575lbs, Capacity 5000lbs

Stackable Three high

Shelves 3 ea levels - multiple shelf positions



QUADCON



20 FT



PLS



463L



## TACTICAL LOCKER MEDIUM

NSN: 8145-01-512-0901

70" / 41" / 79" ( W / D / H)

Weight 790lbs, Capacity 5000lbs

Stackable Two high

Shelves 3 ea levels - multiple shelf positions



TRICON



10 FT



20 FT



PLS



## MEDIUM WORKSTATION

NSN: 8145-01-499-0721 (modification kit for NSN:8145-01-512-0901)

Weight 300lbs

Fit One fits in a TACTICAL LOCKER MEDIUM

Contains POB and SLIDE boxes with internal dividers.



TACTICAL LOCKER MEDIUM



## TACTICAL LOCKER i90

NSN: 8145-01-512-1025

Block + brace kit included

49" / 39" / 79" ( W / D / H)

Weight 520lbs, Capacity 4000lbs

Stackable Two high

Shelves 4 ea levels - multiple shelf positions



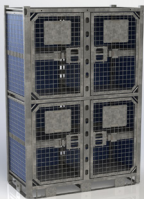
ISU 90



20 FT



463L



## QUAD LOCKER CWL

NSN: 8145-01-512-0919

Add block & brace kit (8145-01-499-0720)

57" / 30" / 83" ( W / D / H)

Weight 580lbs, Capacity 4000lbs

Stackable Two high with only forklift access

4 ea lockable compartments



20 FT



FULL ACCESS IN CONTAINER



## TACTICAL LOCKER FP CWXL

NSN: 8145-01-512-1019

Block + brace kit included

76" / 30" / 86" ( W / D / H)

Weight 625lbs, Capacity 4000lbs

Stackable Two high with only forklift access

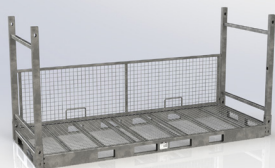
Shelves 3 ea levels - multiple shelf positions



20 FT



FULL ACCESS IN CONTAINER



## STACK RACK XXL+

NSN: 8145-01-512-1017

Add a grid back wall (8145-01-512-0926)

115" / 44" / 59" ( W / D / H)

Weight 330lbs, Capacity 5000lbs

Stackable Four high

Set up by assemble and stack without tools



20 FT



## ORIGINAL MEDIUM

NSN: 8145-01-562-0607

70" / 41" / 79" ( W / D / H )

Weight 680lbs, Capacity 5000lbs

Stackable Two high

Shelves 3 ea levels - multiple shelf positions



TRICON



10 FT



20 FT



PLS



## ORIGINAL LARGE

NSN: 8145-01-512-0923

84" / 43" / 85" ( W / D / H )

Weight 965lbs, Capacity 5000lbs

Stackable Two high

Shelves 4 ea levels - multiple shelf positions



20 FT



463L



PLS



## ORIGINAL XXL

NSN: 8145-01-586-0404

104" / 42" / 85" ( W / D / H )

Weight 1300lbs, Capacity 5000lbs

Stackable Two high

Shelves 4 ea levels - multiple shelf positions



20 FT



463L



PLS



## WHEEL STORAGE AND TRANSPORT (WST) I

NSN: 8145-01-586-0408

89" / 45" / 59"\* ( W / D / H )

Weight 450lbs, Capacity 4000lbs

Stackable Three high

\*Adjustable height based on wheel size



20 FT



463L



PLS



## WHEEL STORAGE AND TRANSPORT (WST) II

NSN: 8145-01-512-0913

44" / 55" / 67"\* ( W / D / H )

Weight 390lbs, Capacity 5000lbs

Stackable Three high

\*Adjustable height based on wheel size



20 FT



463L



PLS



## TACTICAL BASKET HG MEDIUM

NSN: 8145-01-512-0918

70" / 41" / 39" ( W / D / H )

Weight 400lbs, Capacity 4000lbs

Stackable Four high

Half gate (HG) which folds down in the front



TRICON



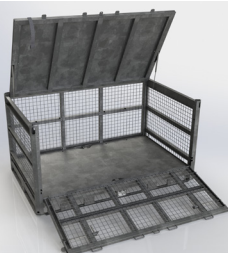
10 FT



20 FT



PLS



## TACTICAL BASKET XL

NSN: 8145-01-499-0718

84" / 52" / 43" ( W / D / H )

WEIGHT 600lbs, CAPACITY 4000lbs

STACKABLE Four high

Detachable full gate which folds down



10 FT



20 FT



463L



PLS



## WEATHER COVERS

NSN: 8145-01-512-1002

NSN: 8145-01-512-1003

NSN: 8145-01-512-1004

NSN: 8145-01-512-1005

GRAY SMALL

GRAY MEDIUM

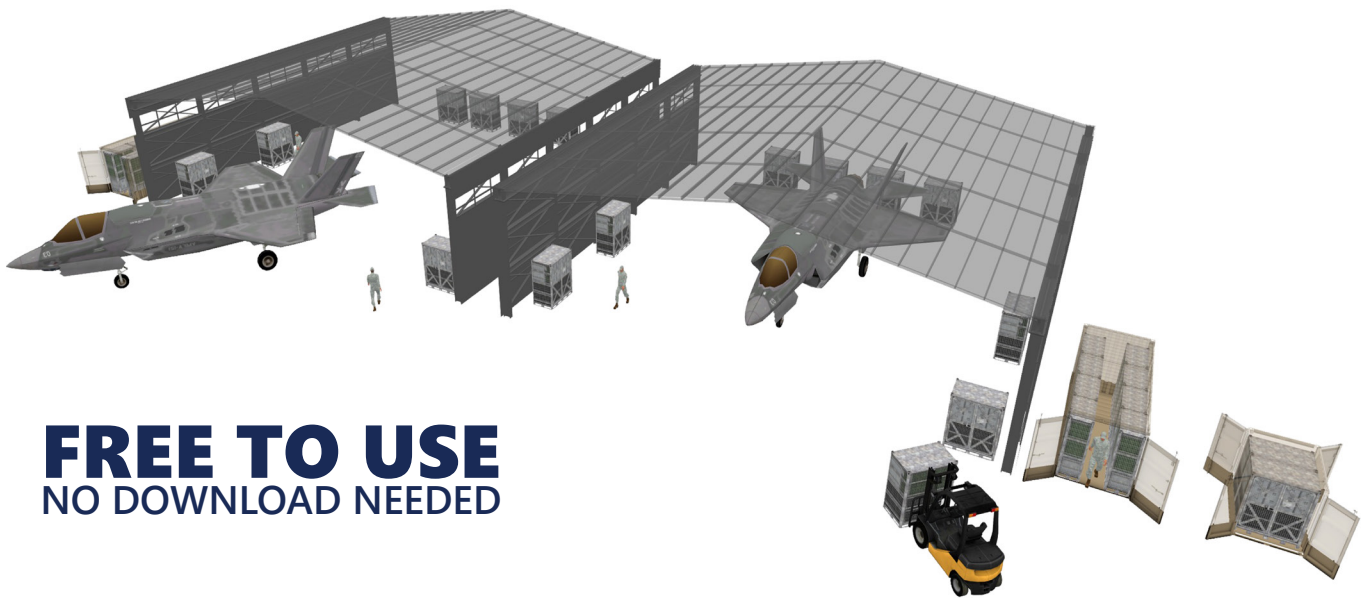
GRAY LARGE

GRAY i90



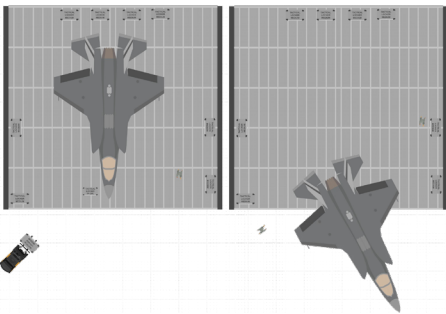
# SHARKCAGE®

## LAYOUT PLANNER



**FREE TO USE**  
NO DOWNLOAD NEEDED

*Online tool to create your own real-life layouts in 2D and 3D with cages, containers, vehicles and buildings. Try it now at [layoutplanner.sharkcage.com](http://layoutplanner.sharkcage.com)!*



### ① BUILD YOUR LAYOUT

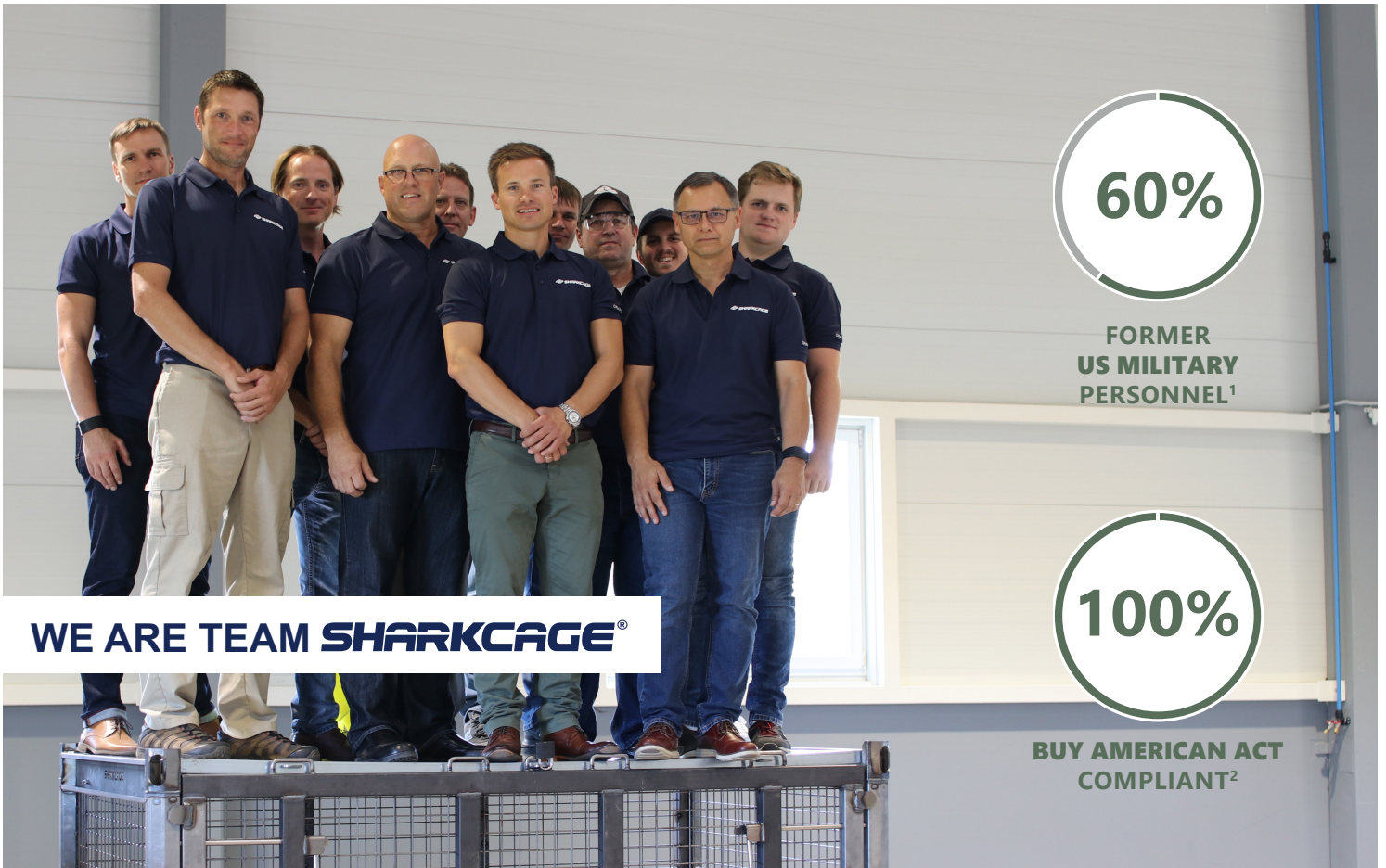
Build your layout with a library of real-size containers, vehicles, people and other objects. Work directly in your browser without downloading any software and see the layout in top view, or directly in 3D view.

### ② ADD SHARKCAGES

Outfit your layout with the SHARKCAGES you need to get a lean logistic operation. Our product line ensures maximum flexibility and organization in any scenario.

### ③ EXPORT THE LAYOUT

Download and review your plan with a table including NSN for each SHARKCAGE and one sheet for each product. Purchase directly from SHARKCAGE or through Governmental agencies: DLA(NSN), DLA(TLS), GSA or MRO.



**WE ARE TEAM SHARKCAGE®**

**60%**

**FORMER  
US MILITARY  
PERSONNEL<sup>1</sup>**

**100%**

**BUY AMERICAN ACT  
COMPLIANT<sup>2</sup>**

SHARKCAGE is an international company with offices in the US and EU. We are proud that we have the largest share of former US military personnel employees compared to any of our competitors. More than half of our employees are former military, even when including our direct sub-suppliers and production<sup>1</sup>.

We believe in producing where we get the best quality and price for each specific part and limit ourselves to Buy American Act<sup>2</sup> compliant suppliers, even though it is not a requirement.

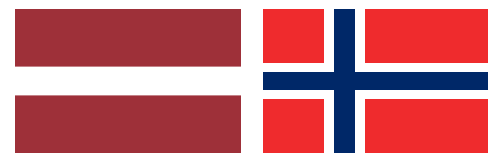
SHARKCAGE has focused solely on military logistics for more than two decades and we have been working

closely with US troops and NATO forces since 1998.

Through product development according to relevant MIL-STD and STANAGS with extensive testing, and customer feedback from military operations, we have created products that solve a broad spectrum of logistical challenges.

It is more important than ever that warfighters can react quickly to crises and conflicts all over the world. Our storage products are developed to move seamlessly between storage, transport, and operation, giving the customer the necessary flexibility to reduce load out times, transition rapidly and increase material

security. With SHARKCAGE storage products, the US Military and other NATO forces are always ready to deploy.



<sup>1</sup> Based on 2019 numbers. Salary cost for sub-suppliers allocated based on work done for us.

<sup>2</sup> SHARKCAGE even buy raw-material and components from Buy American Act compliant countries whenever possible, even though it is not a requirement.



8145-01-512-0901 used for spare parts and tools



8145-01-512-0718 in use for deployable tent storage



8145-01-512-1019 outfitted in container with gear



8145-01-512-0919 at the Star Wars exhibit at Disney World